



SAMARPAN

Lake View

RESIDENTIAL APARTMENTS

KAVOOR - MANGALORE



lakes aren't everywhere!



SAMARPAN

Lake View

RESIDENTIAL APARTMENTS

KAVOOR - MANGALORE

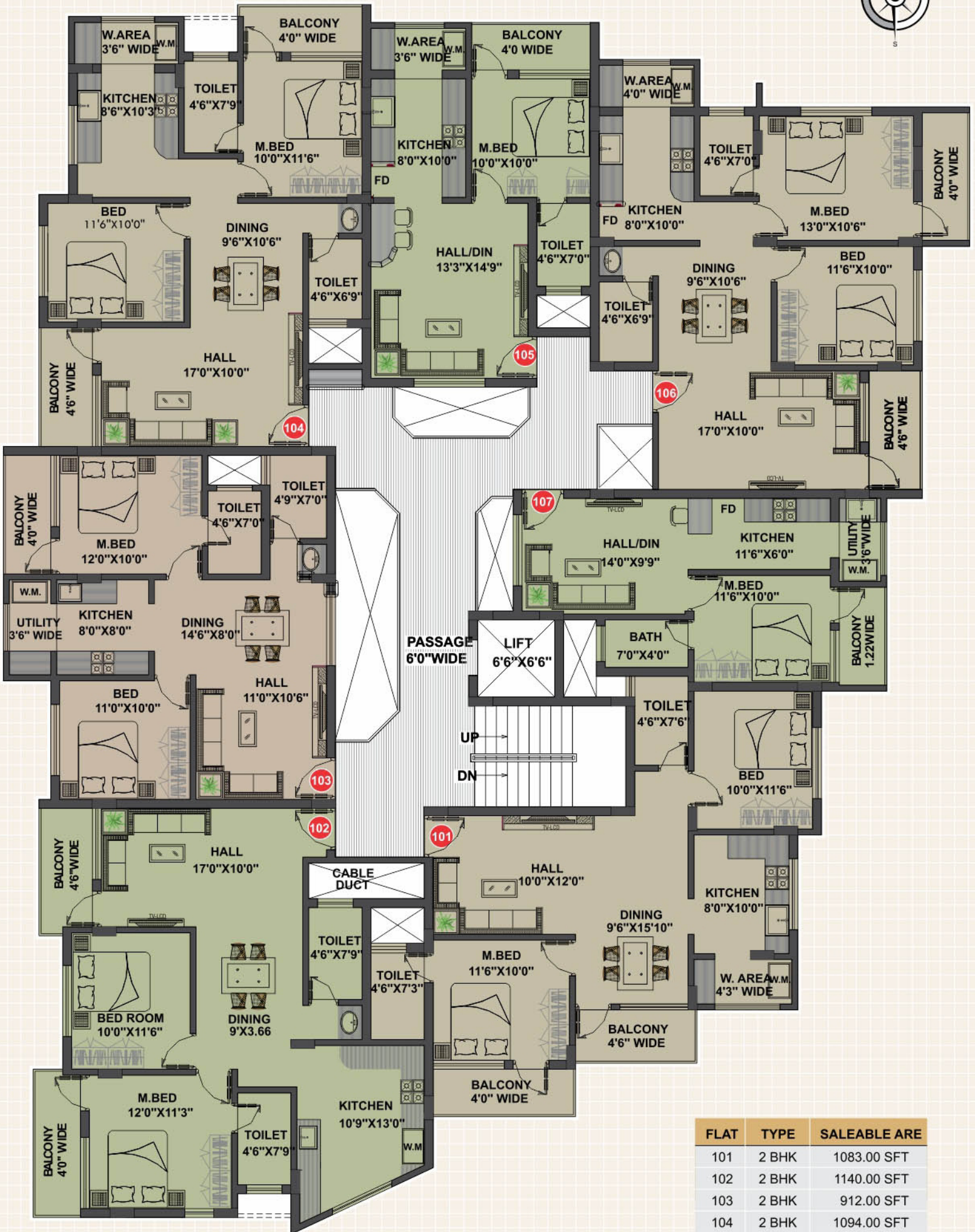
A splendid view of life is picturised when you have green surroundings, birds and a lake! In Mangalore City imagining such a luxury may not be practical enough? But Kavoor is not far off from the Main City. Rather it is mere 4 kms from KSRTC stand, International Airport, Bharath Mall and Lalbagh Junction. The location is mere 3 kms from Kadri Hills or KPT junction. Further the location itself is well endowed with moderate shopping, access to local organic produces, fresh air and chaste sunshine.

" LAKE VIEW" Residential Apartments is a 4 Floor grand construction, altogether 28 spacious apartments for those who desire to have a distinct, exclusive surroundings. Ground Floor is reserved for parking space. A place of sprawling apartments and exclusive surroundings with excellent connectivity to Kavoor, Mary Hill, New Mangalore Port and to many other choice locations around Mangalore city. The place is well connected to schools, colleges and reputed Professional / Medical colleges too.

Samarpan Builders are offering well planned and soundly built apartments with modern fixtures incorporated in each apartment. Each and every apartment is built with good interior planning and vastu considerations. Site location is nearer to Sri Mahalingeshwara Temple and to Derebail Church, which places it as a highly approachable location within city limits. A sure way to reserve your priorities with a moderate investment.



TYPICAL FLOOR PLAN



FLAT	TYPE	SALEABLE ARE
101	2 BHK	1083.00 SFT
102	2 BHK	1140.00 SFT
103	2 BHK	912.00 SFT
104	2 BHK	1094.00 SFT
105	1 BHK	648.00 SFT
106	2 BHK	1098.00 SFT
107	1 BHK	560.00 SFT

Specifications

General

- Fully framed RCC structure Laterite walls for exteriors and concrete blocks for internal walls.
- External Painting of the building with exterior grade approved paints.
- Putty finished acrylic distemper painting for internal walls.
- Attractive and elegant melamine polished main entrance door.
- Wooden door frames with good quality painted or laminated flush door for rooms and fibro tech door for toilets.
- Aluminum powder coated windows.
- Over head water tank and underground sump tank with required pumps & 8 Borewell facility.
- 8 passenger lift.

Living / Dining

- Vitrified tile flooring.
- TV points and telephone points.
- Covered terrace with tiles floorings.
- Sound proof automatic generator.

Bed Rooms

- Vitrified Flooring.
- TV Points and telephone points in master bed room.
- AC, Points provision in the master bed room.

Bath Rooms

- Coloured ceramic tiles (anti skid) for toilet floors and glazed tile dado upto 7'0" height.
- Hot and Cold shower mixer for all toilets.
- European Water Closer (EWC) for toilets.
- Quality CP fitting in all toilets.
- Provision for geaser and exhaust fan points.

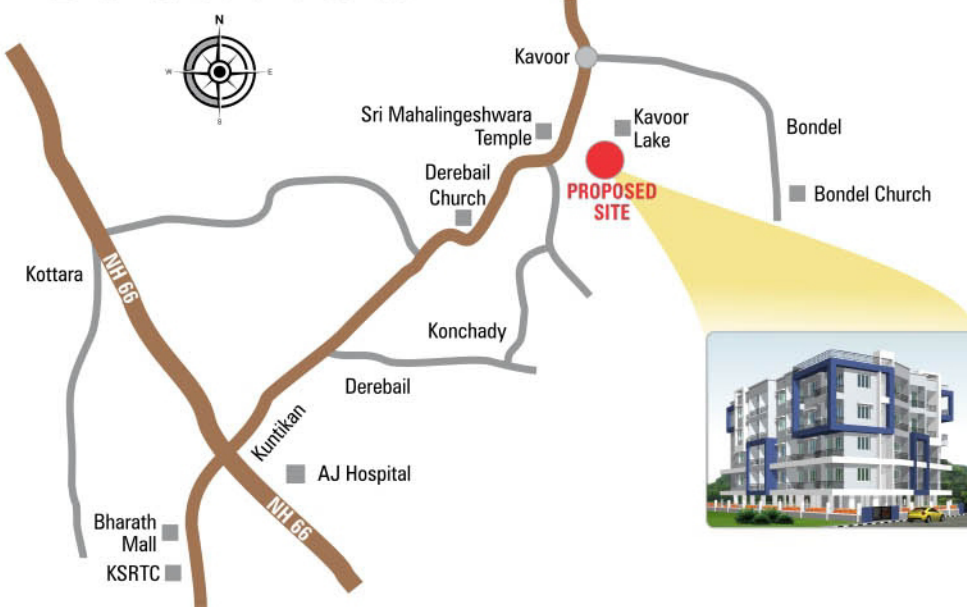
Kitchen / Utility

- Vitrified tile flooring.
- Stainless steel sing and polished black granite counter.
- 2'0" glazed tile dado above platform provision points for fixing water purifier, exhaust fan and washing machine.

Electrical

- Modular switches and sockets.
- Adequate power Point

LOCATION



ONGOING PROJECT



SOWRABHA APT
KADRIKAMBLA

COMPLETED PROJECTS



S.S. PALACE
MARYHILL



NOTTING HILL
MARYHILL



SAMARPAN VIEW
MARYHILL

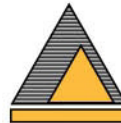
Promoters :



SAMARPAN
BUILDERS

A'n'z Enclave, Below More Supermarket, Bejai Church Road,
Mangalore - 575 004. E : info@samarpanbuilders.com
W : www.samarpanbuilders.com

Architect :



ADAPPA ASSOCIATES
ARCHITECTS

Bejai Church Complex, Bejai,
Mangalore. Ph : 2225070

Structural Consultant :

RAVINDRA KUMAR B.E FIV
2nd Floor, VIJAYA BANK BLD,
Bejai Main Road, Bejai, Mangalore - 04
Ph : 0824 - 2222999

FOR BOOKINGS CONTACT Mob : +91 9986081567